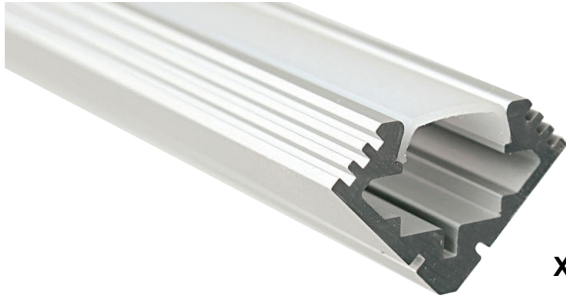
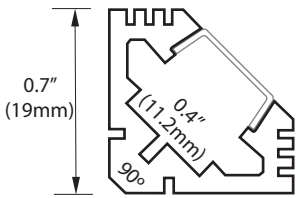


PROJECT	DATE
TYPE	QTY.



**XTRU-4203**



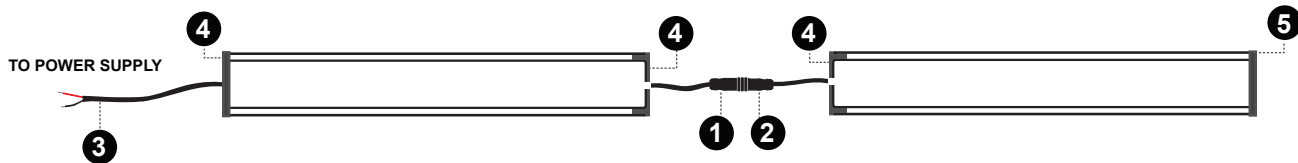
**X-TRU-4203** LED Profiles are an innovative way to create your own light fixtures with LED Strip Light. Suitable for surface mounting or recessed installation, these high quality profiles provide a unique way to make use of linear low voltage lighting and are the designer's choice for creating light fixtures for commercial and residential LED strip lighting.

The X-TRU-4203 Aluminum Mounting Channel is used to hold LED tape light and allows you to create your own custom LED low voltage lighting scheme.

**Please note:** These profiles are only compatible with strip light 0.4 inches wide or smaller. They are compatible with ThinGlow LED Strip Light.

- 1** MALE CONNECTOR
- 2** FEMALE CONNECTOR
- 3** NO CONNECTOR

- ENDCAPS**
- 4** PVC w/ hole
  - 5** PVC closed



### ORDERING

*Example:*

**XTRU-4023 - 24"- AA - F - CW - R - 12 - P**

XTRU-4023 Profile, 24" Cut Length, Anodized Aluminum Finish, Frosted Cover w/ Cool White LED, Right Facing Lead Wire, 12" Wire Length, Closed PVC End Cap

MODEL	CUT LENGTH	HOUSING FINISH	COVER	LED COLOR	LEAD WIRE LOCATION	LEAD WIRE LENGTH	END CAP	OPTIONAL ACCESSORIES
<b>XTRU-4023</b> Aluminum LED Lighted Profile	Write desired length above	<b>AA</b> -Anodized Aluminum <b>NA</b> -Non-Anodized	<b>F</b> - Frosted <b>C</b> - Clear	<b>WW</b> - Warm White <b>CW</b> - Cool White <b>NW</b> - Neutral White <b>RGB</b> - Red, Green, Blue	<b>R</b> - Right Facing <b>L</b> - Left Facing <b>B</b> - Left & Right* (daisy chain)	Write Desired Length Above	<b>P</b> - PVC closed <b>PH</b> - PVC w/ hole	<b>ZMB</b> - Zinc Mounting Brackets <b>CMB</b> - Chrome Matte Mounting Brackets

### X-LUME

A DIVISION OF IMPACT LIGHTING INC.

2101 West Central Blvd. Orlando, Florida 32805 USA • Phone: 1.800.507.5714 • Email: sales@impactlightinginc.com

[www.xlumeled.com](http://www.xlumeled.com)